

# UTS FLEET MANAGER

## Complete Fleet Management Solutions

Are your customers being served efficiently?

Do you know where your assets are?

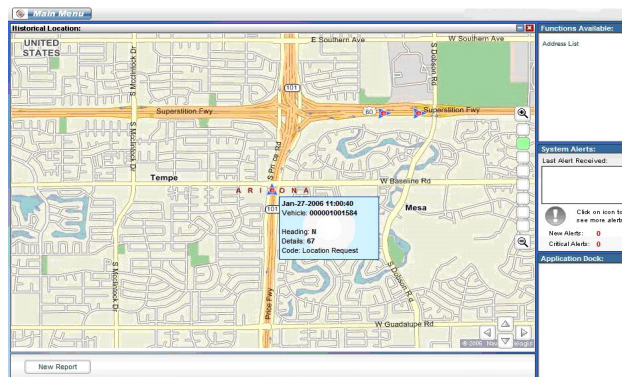
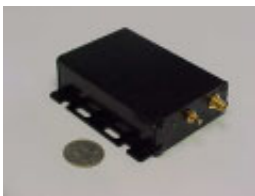
Is your equipment due for maintenance?

Have you billed accurate hours to the job?



UTS Fleet Manager is a comprehensive management system. It allows you to track your mobile assets along with key operating information in real time, providing the information you need to improve productivity and profitability.

You can locate your equipment, know its current status, schedule maintenance, and set geofences that will provide an immediate alert in the event of unauthorized movement.



**Features:**  
Location  
Run hours  
Maintenance notification  
Geo Boundaries  
Daily Route Tracking  
Start/stop reports  
Starter disable  
Speed alerts  
Theft recovery  
Excessive idle report  
and much more...

### Statistics Show:

- Reduced overtime costs by 2-10 percent
- On time delivery improvements of 10-20 percent
- Employee productivity improvements of 50-60 percent (pickers, loaders, dispatch, schedulers, routing, drivers)
- Improved RMA (returned materials authorizations) handling
- Fuel cost reductions form 7-10 percent
- Reduced outside delivery costs by 5-15 percent

**With UTS Fleet Manager you'll have increased safety, enhanced productivity and improve your overall bottom line!**

**Universal Tracking Solutions**  
3317 S. Higley Rd • Suite 114-475  
Gilbert, AZ 85297  
1-877-279-8877 • 480-855-8877  
[www.universaltrackingsolutions.com](http://www.universaltrackingsolutions.com)